

Outstanding Polishability



Resin-based Dental Restorative Material

Metafil **CX**



Excellent Mechanical Property
Stress-free Non-sticky Handling

Shades _____

- | | | | | | |
|----|----|---------|-----------|----|----|
| A1 | A2 | A3 | A3.5 | A4 | B2 |
| C2 | C3 | Incisal | Universal | | |



Metafil CX is a microfill, natural-looking resin composite restorative using a unique prepolymerized organic filler TMPT, which is very reactive with the matrix. This feature gives the finished restoration greater resilience and wear resistance. Metafil CX has excellent adaption and non-sticky handling. It is easy to place beautiful restorations even in the most difficult scenarios. Shades are precisely matched to the VITA shade guide making shade matching both simple and accurate. Metafil CX is super-polishable, it gives outstanding life-like esthetic after quick polishing.

Typical Applications

Fractured incisors



Shade matching on teeth



Restored with Metafil CX



After polishing

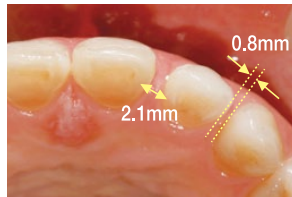


Superior polishability of Metafil CX will guarantee highly esthetic anterior restoration.

Pre-operative labial view



Pre-operative incisal view



Labial view after restoration



Incisal view after restoration



Metafil CX is very retentive to enamel, and it is suitable for closing diastemas.

Pre-operative labial view



After prep and application of bonding agent



Restoration with Metafil CX and polish



After completion



After quick polish, Metafil CX is highly esthetic and ideal for anterior restoration.

Shades

