

MM-MTA™

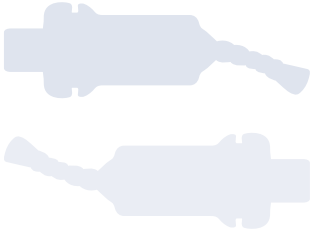
State-of-the-Art Endodontic Repair Cement



Your Endo Specialist™



MM-MTA™



Root canal repair cement

The introduction into the market of MTA (Mineral Trioxide Aggregate) in the 90s has been a veritable revolution that allows successful repair of iatrogenic accidents while reducing the associated pathological complications.

Currently, clinically approved MTA products are available within the dental marketplace. However, MTA traditionally has a long setting time and an often grainy consistency which makes placement more difficult.

MICRO-MEGA® now offers the “State-of-the-Art” MM-MTA™, an endodontic repair cement that has excellent physiochemical characteristics delivered in innovative packaging. MM-MTA™ incorporates a faster set time with a pasty consistency for easy handling and placement.



| Intended uses

MM-MTA™ is used in the following cases:

- **Repair of root perforations.**
- **Root-end fillings (retro and apexification endodontic surgeries).**
- **Pulp capping.**
- **Repair of internal resorptions.**



- Biocompatibility.
- Formation of a protective waterproof layer, resistant to bacterial infiltration.
- Excellent adhesion to the dentine.
- Optimal results, even in humid conditions.
- Radiopacity.

Innovative characteristics

Thanks to its unique characteristics, MM-MTA™ offers indisputable advantages compared to other existing materials:

An adapted packaging:

- Consisting of capsules containing MM-MTA™ powder and liquid, automatic mixing is achieved quickly with a vibrating mixer. In addition, the resulting MM-MTA™ blend is extremely homogenous with transformation properties which are always optimal and reproducible.
- Each capsule contains the exact dosage of MM-MTA™ to avoid waste.

A homogenous consistency:

- MM-MTA™ packaging insures a consistently high-quality product mix for simple handling and easy placement within the root canal.

A reduced setting time (20 minutes):

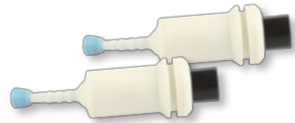
- The addition of calcium carbonate (CaCO₃) considerably reduces the setting time and also allows filling in the same session.

Simple, quick...





MM-MTA™ Cap contains liquid and 0.3 gr of MM-MTA™ powder. Each capsule is wrapped in a hermetic aluminium pack.



MM-MTA™ Gun

MM-MTA™ Gun for the extrusion of the material from the capsule.

Advantages of the MM-MTA™ Gun:

- Autoclavable - easy to clean.
- Without sharp edges - ergonomic for maximum comfort.
- Stainless steel: resistant.



**Obturation of large and open apices
(Figures 1 and 2)**

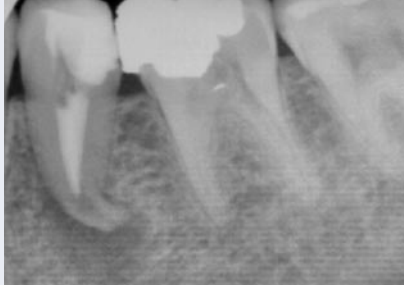


1

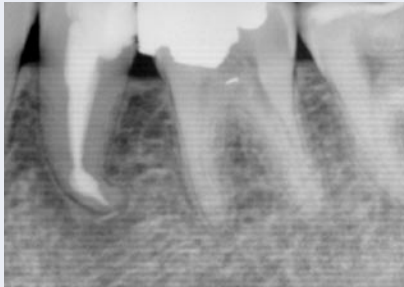


2

**Repair of an internal
apical resorption
(Figures 3 and 4)**



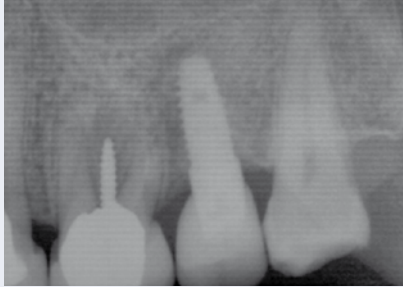
3



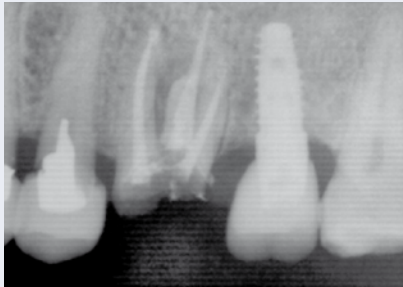
4

*Product developed in collaboration with Dr. Issam Khalil and Dr. Alfred Naaman, Laboratory of Medicine and Dentistry, Saint-Joseph University, Beirut, Lebanon.
Clinical cases made by Dr. Issam Khalil.*

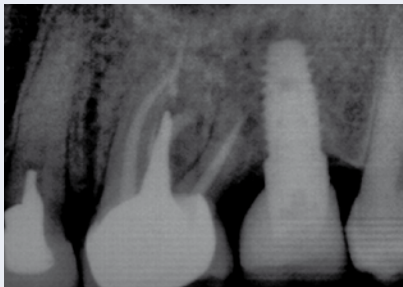
**Repair of palatal
and pulp floor perforations
(Figures 5, 6 and 7)**



5

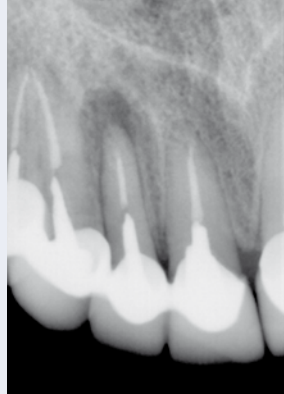


6



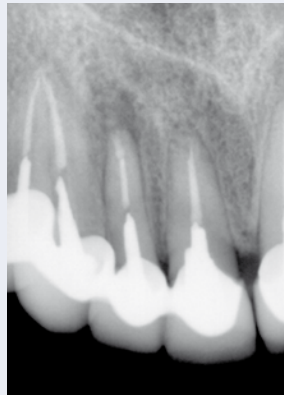
7

**Endodontic microsurgery
on a lateral incisor
(Figures 8 and 9)**



8

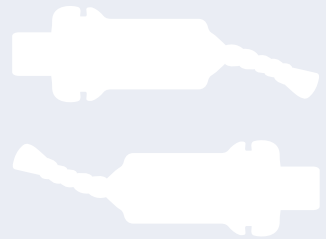
Pre-operative x-ray



9

Post-operative x-ray

Clinical cases



Contact us for more
information:
www.micro-mega.com



MICRO-MEGA®

5-12, rue du Tunnel
F-25006 Besançon Cedex
Tel.: +33 (0)3 81 54 42 34
Fax: +33 (0)3 81 54 42 39
mmid@micro-mega.com