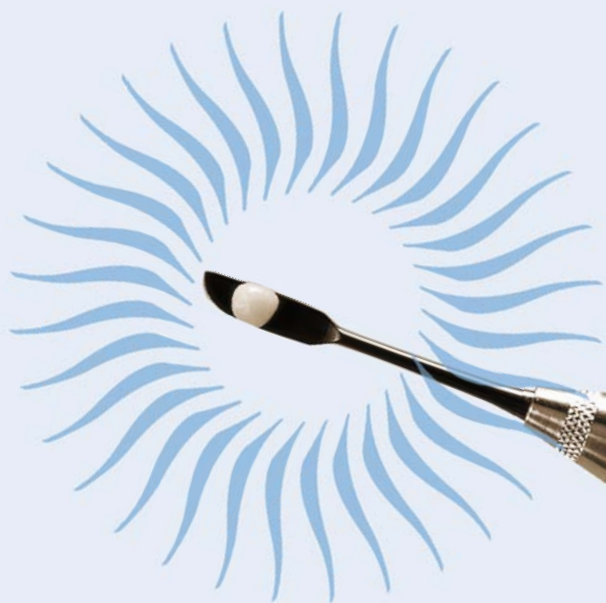


RESTORATIVE



SATIN STEEL XTS

HIGH PERFORMANCE COMPOSITE INSTRUMENTS

How the best perform



Advanced technology and innovative design have enabled Hu-Friedy to produce a superior instrument: **XTS COMPOSITE INSTRUMENTS.**

XTS Instruments allow for exceptional non-stick placement of composite materials without discoloring the restoration.

FEATURES & BENEFITS

DISTINCTIVE BLACK FINISH

Enhanced contrast between instrument, tooth structure and composite material. The black finish will not flake or discolor the restoration.

UNIQUE SMOOTH, LARGE, LIGHTWEIGHT HANDLE DESIGN

Easy clean-up, maximum comfort, reduced hand fatigue and an increased level of control.*

QUALITY CRAFTSMANSHIP / VARIETY OF DESIGNS

Satin Steel XTS instruments offer unsurpassed performance and an extensive assortment of designs for all composite placement needs.



FREEDMAN

POSTERIOR COMPOSITE INSTRUMENTS

Instruments specially designed to pre-contour and shape the occlusal surface of the uncured composite.

THE DUCKHEAD INSTRUMENT

Duckhead Instrument is used to contour the convexity of the cusp ridge, developing the anatomy in a single motion.

| TNPCI



CONTACT FORMING COMPOSITE INSTRUMENT (SMALL)

Oval-shaped paired instrument designed to provide improved contact forming for small Class II restorations.

| TNFCIS



CONTACT FORMING COMPOSITE INSTRUMENT (LARGE)

Oval-shaped paired instrument designed to provide improved contact forming for large Class II restorations.

| TNFCIL



GOLDSTEIN

FLEXI-THIN COMPOSITE INSTRUMENTS

The Goldstein Flexi-Thin collection also includes mini designs for small and difficult-to-access preparations.

#1 GOLDSTEIN FLEXI-THIN

| TNCIGFT1

Small universal style rounded condenser tip and thin, narrow paddle for initial placement and contouring. Application: Class I, II and III restorations.



#2 GOLDSTEIN FLEXI-THIN

| TNCIGFT2

Larger universal style for final placement and contouring. Application: Class I, II and III restorations.



#3 GOLDSTEIN FLEXI-THIN

| TNCIGFT3

Flexible, reversed, flared paddle design for shaping and placement. Application: Class III and IV restorations.



#4 GOLDSTEIN FLEXI-THIN

| TNCIGFT4

Very thin, flexible, paired, offset, paddle-shaped blades for placing and shaping material on posterior, mesial, and distal surfaces. Reverse angle is also useful for placing and shaping anterior bonded restorations.



#5 GOLDSTEIN FLEXI-THIN

Small reverse angle tips make it easy to place fissures, grooves and pits creating the ideal occlusal anatomy in hard-to-reach posterior areas.

| TNCIGFT5



#6 GOLDSTEIN FLEXI-THIN

Large reverse angle tips make it easy to place fissures, grooves and pits creating the ideal occlusal anatomy in hard-to-reach posterior areas.

| TNCIGFT6



MINI #1 GOLDSTEIN FLEXI-THIN

For small pits and fissures, tunnel preps or minor tooth defects on lower anteriors.

| TNCIGFTMI1



AVAILABLE IN
MICRO MINI | TNCIPCS

MINI #3 GOLDSTEIN FLEXI-THIN

Flexible, reversed small flared paddle design for shaping and placement in small preparations.

| TNCIGFTMI3



MINI #4 GOLDSTEIN FLEXI-THIN

Ideal for placing and shaping material in difficult-to-access mesial and distal posterior restorations.

| TNCIGFTMI4



GOLDFOGEL

FREEHAND COSMETIC CONTOURING INSTRUMENTS

Nine freehand cosmetic contouring instruments designed specifically for anterior and posterior use.

#1 GOLDFOGEL

Angle of tip allows easier access for contouring composite material on larger facial surfaces of central incisors.

| TNCCIA



#2 GOLDFOGEL

Straight or angled end can be used for contouring composite material on smaller facial surfaces of central incisors.

| TNCCIB



#3 GOLDFOGEL

Flat side of the blade is used for interproximal contouring on central incisors.

| TNCCIC



#4 GOLDFOGEL

Used when working near or at interproximal areas. Straight end compacts composite material, while sharp knife edge cuts composite to avoid bonding to adjacent tooth.

| TNCCID



#5 GOLDFOGEL

Curved blades for thinning and shaping composite material at the gingival areas.

| TNCCIE



#6 GOLDFOGEL

Curved blades for adding and shaping composite material on desired areas of facial incisors.

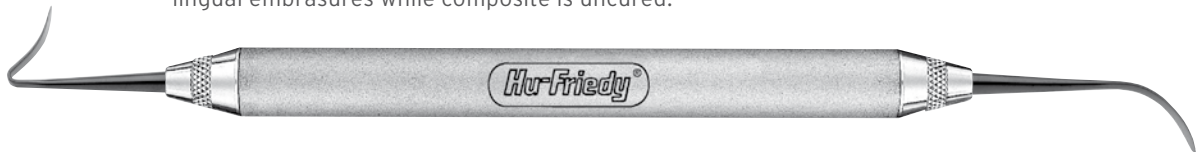
| TNCCIF



#7 GOLDFOGEL

Allows formation of marginal ridges along with buccal and lingual embrasures while composite is uncured.

| TNCCIG



#8 GOLDFOGEL

Designed to help attain proper occlusal form, function and improve marginal seal.

| TNCCIH



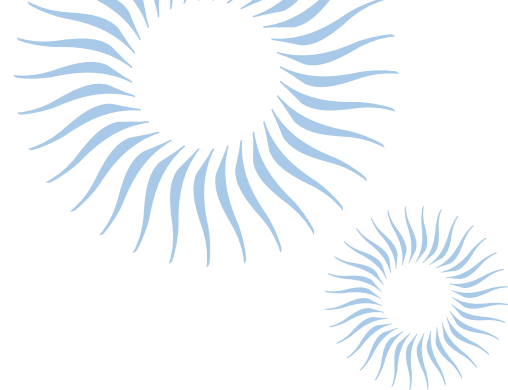
#9 GOLDFOGEL

Aids in forming a properly filled axial box and occlusal portion.

| TNCCII



BOGHOSIAN / LADMORE



#1 BOGHOSIAN

| TNPF1AB1

A combination of thin, knife-shaped blade with standard angled blade. Knife blade allows controlled, efficient manipulation of composite, even in gingival areas. Application: Class III, IV and V restorations.



#2 BOGHOSIAN

| TNPF1AB2

Used for measuring composite layers and shaping occlusal anatomy.



LADMORE #2

| TNBBL2

Medium and large rounded tips for condensing composite materials.



LADMORE #3

| TNBBL3

Small and medium slightly rounded tips for condensing composite materials.



GENERAL

Hu-Friedy's XTS instruments provide high-quality options for every step of a restorative procedure. The general XTS instruments include carvers, filling instruments, contouring instruments, pluggers, burnishers and more.

#21B DE BURNISHER

| TNBB21B

Acorn shaped instrument for carving occlusal anatomy in posterior restorations.



#27/29 DE BURNISHER

| TNBB27/29

Used to blend material to margin for final contouring, to achieve sculpting of areas like grooves, fissures or pits and to carve occlusal anatomy.



SMALL/MEDIUM BALL BURNISHER

| TNBBS/M

Shape conforms to rounded corners or junctions of cavity surfaces to condense and shape composite against the cavity wall.



SMALL/MEDIUM CONTACT FORMING

| TNCFIS/M

Oval-shaped paired instrument designed to provide improved contact forming for small/medium Class II restorations.



MEDIUM/LARGE CONTACT FORMING

| TNCFIM/L

Oval-shaped paired instrument designed to provide improved contact forming for medium/large Class II restorations.



GENERAL

CONTOURING INSTRUMENT

| TNCFIR/L

Used for shaping of inclines, planes or developmental lobes for anterior and posterior restorations. The different angles of curvature on each end provide a buccal and lingual orientation for posterior shaping or a facial and lingual orientation for anterior shaping.



INTERPROXIMAL CARVER

| TNCVIPC

Extremely thin, flexible blades opposed for easy handling of composite materials and interproximal contouring. Application: Class I, II, IV and V restorations.



MEDIUM PLACING/ CONDENSING

| TNCIPCM

For small pits and fissures, as well as placement and condensing with limited access.



LONG INTERPROXIMAL CARVER

| TNCVIPCL

Used for placement of the composite increments against the cavity wall or adjacent tooth surface.



LARGE PLACING/ CONDENSING

| TNCIPCL

For final placement in Class I and II restorations. The larger, round ball end is used for condensing and shaping in Class I and II restorations and on lingual surfaces of anterior teeth.



#8A DE

| TNPFI8A

Used for gingival retraction, as well as to place and sculpt facial aspects.





#A6 DE

| TNPFIGA6

Large, thin blades are opposed for adaptability to any situation, including veneers where broad contouring or carving strokes are needed. Application: Class II, III, IV and V restorations.



OT TANNER

| TNPLGOT

Rhomboid-shaped plunger for use with condensable composite material in posterior restorations.



#4/5 GREGG DE

| TNPFIG4/5

Off-angled blades allow easy adaptability to mesial and distal surfaces of posterior teeth, providing increased interproximal access and better visibility of the working area. Application: Class II and V restorations.



#5A SMALL, ROUND

| TNPLG5A

#5A Small, round, inverted cone plunger for use with condensable composite material in posterior restorations.



#W3 DE PLASTIC FILLING INSTRUMENT

| TNPFIW3

Combination of medium-sized blade with small condenser tip for universal adaptability. Ideal for placement, layering and general contouring. Application: Class I, II, III, IV and V restorations.



#3 HOLLENBACK RECTANGULAR

| TNPLGH3

Rectangular-shaped plunger for use with condensable composite material in posterior restorations.



MICRO MINI #1 GOLDSTEIN FLEXI-THIN

| TNCIPCS

Micro-Mini for extremely small pits and fissures.



KIT LISTS

ANTERIOR KIT

Five specially designed Anterior Satin Steel XTS Composite Instruments to be used for placing, condensing, and carving composite materials.

| TNANTKIT

#3 Goldstein Flexi-Thin	TNCIGFT3
Micro Mini #1 Goldstein Flexi-Thin	TNCIPCS
Medium Placing/Condensing	TNCIPCM
Large Placing/Condensing	TNCIPCL
Mini #1 Goldstein Flexi-Thin	TNCIGFTM1

POSTERIOR KIT

Five Posterior Satin Steel XTS Composite Instruments specially designed for Class I & II restorations.

| TNPOSKIT

OT Tanner	TNPLG0T
#3 Hollenback Rectangular	TNPLGH3
#5A Small, Round	TNPLG5A
Small/Medium Contact Forming	TNCFIS/M
Medium/Large Contact Forming	TNCFIM/L

For more information about
Hu-Friedy's Total Solutions visit

hu-friedy.eu

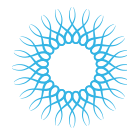
PERIODONTAL



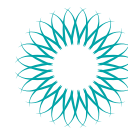
RESTORATIVE



ORTHODONTIC



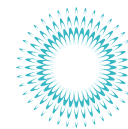
INSTRUMENT
MANAGEMENT



ENDODONTIC



SURGICAL



ULTRASONIC
SCALING



Manufacturer: Hu-Friedy Mfg. Co., LLC | 3232 N. Rockwell Street | Chicago, IL 60618 | USA
Customer Care Department: Hu-Friedy Mfg. B.V. | P.O. Box 29025 | NL-3001 GA Rotterdam | Netherlands
Free Phone 00800 48 37 43 39 | **Free Fax** 00800 48 37 43 40 | **Website:** Hu-Friedy.eu

Hu-Friedy